

More information and directions,



Afternoon Play and Relaxation
Bask in the light and love of the divine
in this sacred place.
Clear your mind and join our ohana
for an afternoon swim in the beautiful
swimming hole
that is adjacent to our picnic space
or take a nap on the thick grass.

Bring:

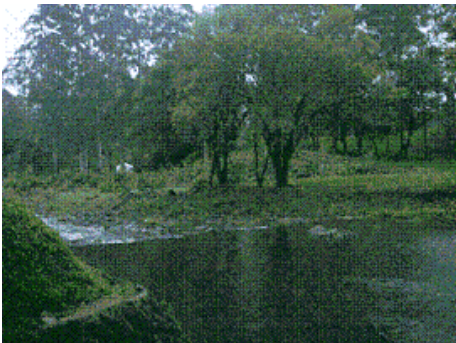
Plan to bring things for your comfort. The only facilities are two picnic tables in poor repair with a tin roof and an outhouse.

Afternoon play and relaxation options: swim wear, sun protection, water shoes, mat or blanket, chair, umbrella for shade or rain, and drinking water.

Potluck There is not drinking water or electricity there so be sure and have your picnic dish ready to serve including serving utensils. Plates, silverware and punch will be provided. We are setting up a canopy for the food. It will be perfectly and divinely orchestrated as always.

DIRECTIONS to Wailua Arboretum

From Kuhio Hwy go mauka on Kuamoo Rd and continue to the river crossing. If the water is low drive across and park in the gravel parking area. If the water looks to high park in the paved lot just before the river crossing and walk across the river. There is a cement walkway across the road from the gravel parking area that leads into the arboretum lawn area. Continue for a short walk following the pathway to the first picnic area adjacent to the river.



Look for our white canopy.

I hope you will be able to join us!

Love, Catherine